

FALL 2007



UPCOMING MEMBERSHIP EVENTS

SATURDAY, SEPTEMBER 22nd, 12–5 p.m., at Monacacy Creek Park (Pavilion #1) on Illick's Mill Road. Come join the **FOOD, FUN & GAMES** at Pa Playhouse's Annual Membership Picnic! The Playhouse will provide hot dogs, hamburgers, chips, beverages, and paper products. We are asking you to bring a favorite covered dish to share...If your last name starts with A-L, bring a dessert. If your last name starts with M-Z, bring a side dish. RSVP by calling Chip Rohrbach at 610-820-7556 or email at chip@betterworkbyfar.com no later than 9/15/07.

SATURDAY, FEBRUARY 16th, NYC Bus Trip to see Mel Brooks' **YOUNG FRANKENSTEIN, THE MUSICAL!** Price is \$180, which covers your round-trip bus fare, driver's tip, refreshments/games/prizes on the bus, and your show ticket (orchestra seat) for the 8 p.m. performance. We only have 50 tickets. Call Ralph Montesano at 610-966-5622 on **SEPTEMBER 15th** to reserve your seat. Reservations will not be taken before September 15th!

Sweeney Todd opens October 5th!

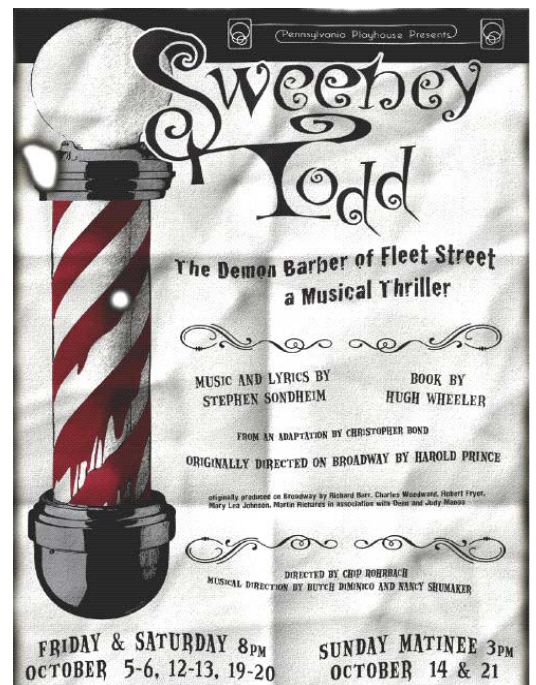
October 5, 6, 12, 13, 14, 19, 20, 21

Fridays & Saturdays at 8:00 PM; Sundays at 3 p.m.

“Attend the tale of Sweeney Todd”, Stephen Sondheim’s operatic masterpiece! Based on Christopher Bond’s retelling of the Demon Barber of Fleet Street, a gentleman returns to England hell-bent on revenge and takes up with his enterprising neighbor in a delicious plot to slice their way through the upper crust of Victorian London. Justice will be served – along with a dash of humor and a pinch of bloody good thrills! This Tony Award winning score features such classics as “Johanna”, “Not While I’m Around”, “Little Priest”, “By the Sea” and “Pretty Women”. Be ready for a “bloody” good time!

Directed by CHIP ROHRBACH

Music Directors: Butch DiMinico and Nancy Shumaker



Another look at our Spring and Summer shows...



MY FAIR LADY



THE NERD



CINDERELLA

If you missed these shows, read the critics' reviews on www.paplayhouse.org



BITS & PIECES

Changes to the Playhouse Board of Directors: On March 21st, Mark Breiner stepped down as President due to increased work commitments. In response to that action, Linda Pacifico moved from VP to President, Dan Lewis moved from Membership Director to VP, Chip Rohrbach moved from Development Director to Membership Director, and Ralph Montesano was called by the Board as our new Development Director.

Our 2008 Season is just around the corner! Watch for your new season brochure to arrive in December for more information on our upcoming season of shows which include: *The Miss Firecracker Contest*, Rodgers & Hammerstein's *Oklahoma*, *One Flew Over the Cuckoo's Nest*, *Oliver*, *Chicago* (rights pending), and *Absurd Person Singular*.

Our April 28th Spring Clean-Up Day was a complete success! We had a nice number of volunteers, 6 of whom were Bethlehem School District students, to help us clean up and clear out the Playhouse. The Box Office and prop loft have been re-worked and reorganized, and the back work area has been cleared of many old and unusable items. But the best part of the day was the delicious luncheon that Nancy Shumaker prepared for all the hard workers! Thanks again to all who had a part in this day.

Regarding Costume Donations: In light of the many costume donations that are dropped off at the Playhouse, we must ask that if you have anything unusual or of "period", that you would contact Brenda McGuire via email (brendam@ptd.net) and describe what you have, so that she can determine if it's something we are in need of, or something we've already got plenty of. Thank you!

YOU'VE GOT TO PICK A POCKET OR TWO

and have your name or business acknowledged in
PA Playhouse's 2008 season program

Now is your chance to ***be a part of the gang*** and have your name or business acknowledged in every program printed during our very exciting 2008 season
(that's over 7,000 show programs !!)

All contributions are gratefully accepted and are tax deductible!

**~ Individual donations are acknowledged in the program
by the level of giving:**

- Executive Producer (\$2001+)
- Associate Producer (\$1000 - \$2000)
- Director (\$500 - \$999)
- Star Performer (\$250 - \$499)
- Supporting Actor (\$100 - \$249)
- Ensemble (\$50 - \$99)
- Chorus (up to \$49)



~ Business Advertising:

- Inside Front Cover (\$450.00)
- Inside Back Cover (\$450.00)
- Outside Back Cover (\$500.00)
- Full Page (\$350) 8.5 x 5.5 ad
- Half Page (\$200) 4.25 x 5.5 ad
- Quarter Page (\$125) ***Business Card Size***

Business Advertisers-Submit as indicated below w/ your camera-ready ad copy or email in .pdf format to
mhaney@bracycontracting.com

Donation deadline is December 5, 2007

Please make checks payable to the **PENNSYLVANIA PLAYHOUSE** and mail to: Maggie Haney-O'Leary (2008 Season Program Committee Chair), 4255 Ascot Circle, Allentown, PA 18103

Call Maggie at 610-533-5076 for questions relating to the 2008 Season Program Advertising

The PA Playhouse is a 501(c)3 charitable organization. If your employer offers matching gift programs, just send us the forms and we'll do the rest!

***Our continued efforts can only be obtained through the generosity and support of the community.
THANK YOU!***

PENNSYLVANIA PLAYHOUSE

Located on Illick's Mill Road between Rt. 512
and Schoenersville Road in Bethlehem, PA

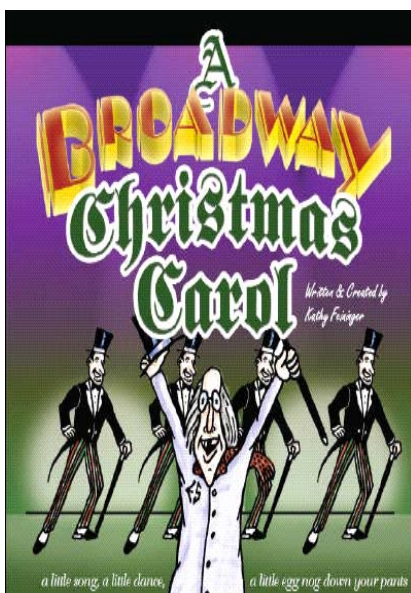
P.O. Box 20122
Lehigh Valley, PA 18002-0122
Phone: 610-865-6665

We're on the Web!
www.paplayhouse.org

Visit us to see our exciting
2007 Season!!

**WE ARE A NON-PROFIT
COMMUNITY THEATRE!**

**A BROADWAY CHRISTMAS CAROL, an uproarious
holiday romp, closes out our 2007 Season!**



*Have you ever wondered what would happen if Scrooge sang show tunes? If Tiny Tim were a character from Annie? If Jacob Marley were a woman? Well, wonder no more as the Pennsylvania Playhouse presents the **Lehigh Valley Premiere** of Kathy Feininger's **A Broadway Christmas Carol!** A delicious cross between the classic Dickens' tale and uproarious song parodies of your favorite Broadway show tunes, this irreverent and boisterous alternative to traditional holiday fare will leave you rolling in the aisle and crying out for more! Here's to "a little song, a little dance, a little egg nog down your pants!"*

Directed by Ralph Montesano

November 30, December 1, 7, 8, 9, 14, 15, 16

Fridays and Saturdays at 8 p.m.

Sundays at 6 p.m.